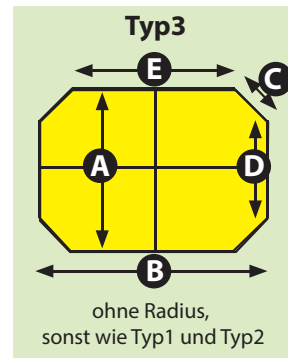
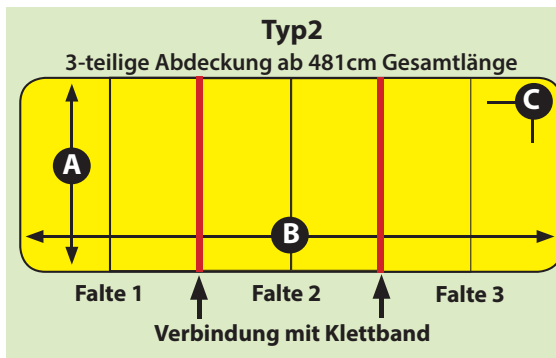
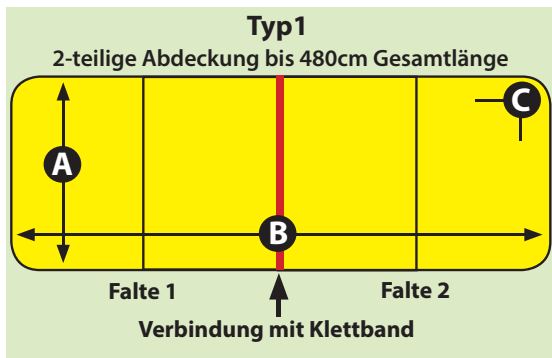




Bestellformular Swim Spa Maßabdeckung

Name: _____ Telefon: _____ E-Mail-Adresse: _____

Ausführung



Detailinformationen für die Bestellung

Welchen Typ bestellen Sie? Typ1 Typ2 Typ3

Bitte geben Sie hier Ihre aufgerundeten Abmessungen ein:

Maß A _____ cm

Maß B _____ cm

Maß C _____ cm

Maß D _____ cm (nur Typ3)

Maß E _____ cm (nur Typ3)

Schürzenlänge _____ cm

Radius _____ cm (nur Typ1 + Typ2)



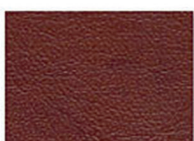
Radius

Schürzenlänge

Farbauswahl



1001#-Black



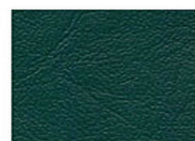
1002#-Brown



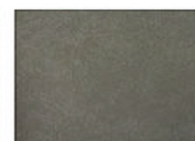
1003#-Blue



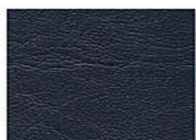
1004#-Yellow Brown



1005#-Green



1006#-Light-Gray



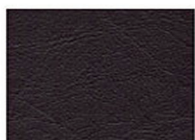
1007#-Dark-Gray



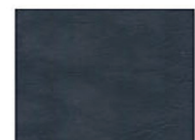
1008#-Burgundy



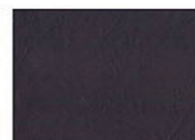
1009#-Vein-Gray



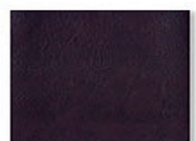
1010#-Coffee



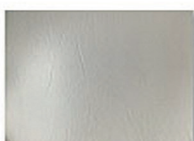
1013#-Charcoal



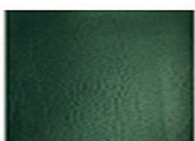
1014#-Dark Brown



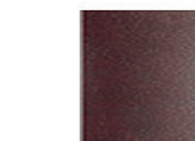
1015#-Mahogany



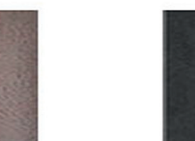
1016#-White



1019#-Premium Green



1020#-Reddish Brown



1021#-Charcoal Gray

Wichtig! Die Abdeckungen werden nach den in diesem Dokument angegebenen Maßen gefertigt. Für falsche Angaben oder Messfehler können wir keine Haftung übernehmen. Bei Unklarheiten fragen Sie uns bitte.

Datum: _____ Unterschrift _____